

2019 REDHAWK SE • REDHAWK



2019 REDHAWK SE • REDHAWK



Abby, Lisa and Matt
The North Woods - 2009



2
YEAR
LIMITED
WARRANTY



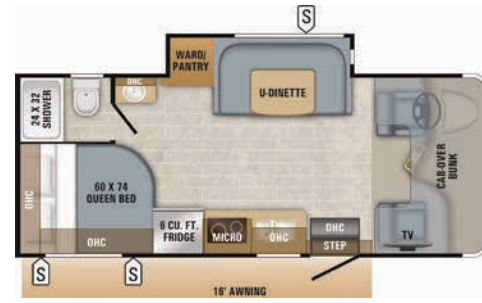
REDHAWK SE

FEATURED FLOORPLAN 22A:

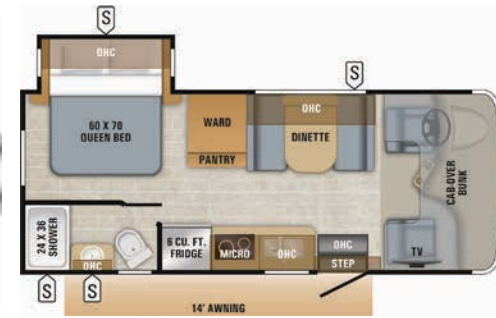
- STAINLESS STEEL SINKS
- CONVECTION MICROWAVE
- 2-BURNER COOKTOP
- 6 CU. FT. REFRIGERATOR
- 750-POUND OVERHEAD BUNK CAPACITY



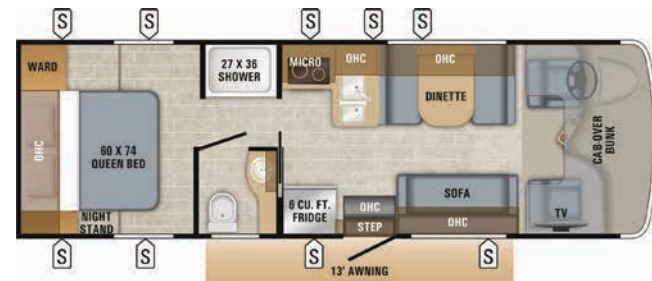
REDHAWK SE FLOORPLANS



22A



22C



27N

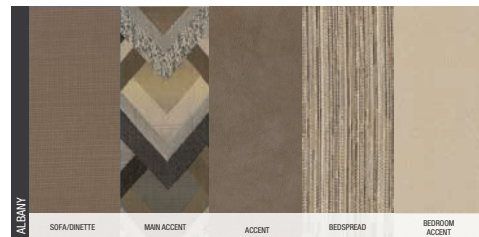
SPECS

MODELS		DIMENSIONS					TANKS (GALS.)		
MODEL	FLOORPLAN	EXTERIOR LENGTH	EXTERIOR WIDTH	EXTERIOR HEIGHT (WITH A/C)	INTERIOR HEIGHT	WHEEL BASE	FRESH WATER CAPACITY (GAL.)	GREY WASTE WATER CAPACITY (GAL.)	BLACK WASTE WATER CAPACITY (GAL.)
REDHAWK SE	22A	25' 2"	100"	11' 6"	84"	159"	43.5	40	32
	22C	25' 2"	100"	11' 6"	84"	159"	43.5	40	31
	27N	30' 3"	100"	11' 6"	84"	191"	43.5	40	32
REDHAWK	22J	24' 8"	100"	11' 6"	84"	158"	43.5	40	31
	24B	26' 8"	100"	11' 6"	84"	181"	42.5	40	31
	25R	28' 8"	100"	11' 6"	84"	181"	47	41	32
	26XD	28' 8"	100"	11' 6"	84"	181"	42.5	41	32
	29XD	32' 6"	100"	11' 6"	84"	223"	43.5	41	32
	31F	32' 6"	100"	11' 6"	84"	223"	47	41	32
31XL	32' 6"	100"	11' 6"	84"	223"	47	41	32	

EXTERIOR



INTERIOR DECOR



Gross Vehicle Weight Rating (GVWR): The maximum permissible weight of the motorhome, including the Unloaded Vehicle Weight (UVW) plus passengers, personal items, all cargo, fluids, options and dealer-installed accessories. The GVWR is equal to or greater than the sum of the UVW and the Cargo Carrying Capacity.

Gross Combined Weight Rating (GCWR): The maximum allowable combined weight of the motorhome used as a tow vehicle and the attached towed vehicle.

It is important for your safety and enjoyment that you are aware of the weights and tow ratings of the RV you select. Consult a competent advisor for questions or advice. Whether you are new to RVing or a veteran, get a feel for the performance of your RV before heading out on the roadways. When you tow a vehicle with your RV, you must drive differently than when you drive a single vehicle. Practice hooking up, driving, backing up and braking in a safe environment or seek out professional instruction. Jayco affixes a weight label to each RV which lists weight information for that vehicle. Refer to that label to verify the vehicle will meet your requirements.



REDHAWK FLOORPLANS



22J



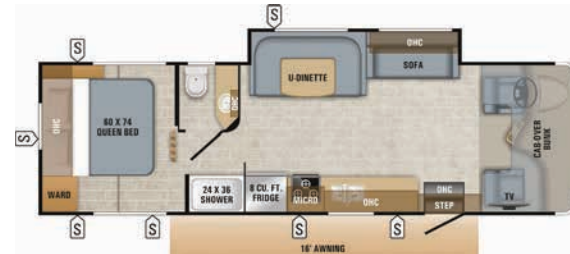
24B



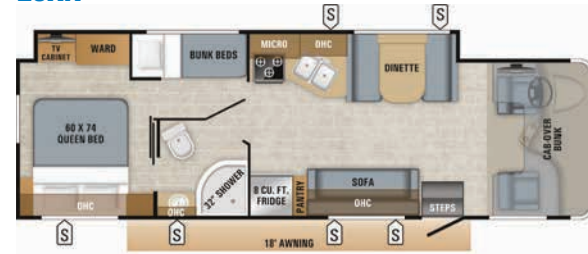
25R



26XD



29XK



31F

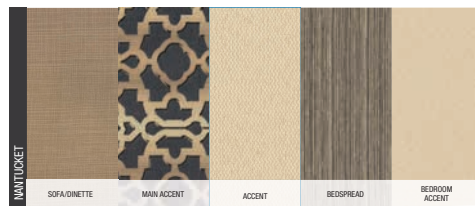


31XL

EXTERIOR SELECTIONS



INTERIOR SELECTIONS





THE JAYCO DIFFERENCE

1. **One-piece seamless fiberglass front cap** for increased durability and protection
2. **750-pound overhead bunk capacity** offers nearly 250 pounds more than the industry average for greater safety and peace of mind
3. **Integrated electric step** maximizes ground clearance and floor space
4. **Integrated third brake light** improves safety on the road
5. **Seatbelts** in every seating position
6. **Frameless windows** make exterior maintenance easier than ever and give the unit a sleek, modern look (N/A on Redhawk SE)
7. **Full pass-through storage** for easy packing and unpacking (select models)



To see a full list of standards and options, use your camera app to scan code.



REDHAWK

REDHAWK SE

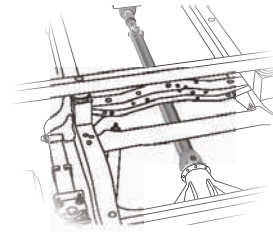


JRide® is a powerful blend of precise handling and renowned stability. Hands down, it's the best ride. Experience JRide for yourself—visit your local dealer and take a test drive.

*JRide is featured on Redhawk models. It is not available for Redhawk SE models.

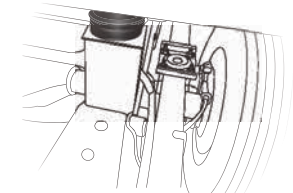
COMPUTER-BALANCED DRIVESHAFT

Ensures smooth and efficient power transfer to the wheels



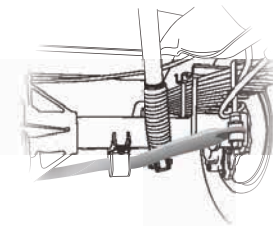
RUBBER ISOLATION MOUNTS

Positioned near the tires to absorb road shock, dampen noise and minimize vibrations



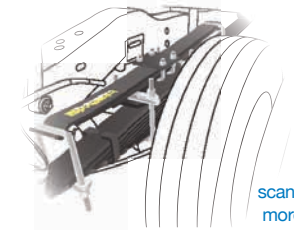
STANDARD FRONT & REAR STABILIZER BARS

Reduces the body roll of a vehicle during fast cornering or over road irregularities



HELLWIG® HELPER SPRINGS

Work with the chassis' existing springs to give the RV more support, improving stability under heavy loads



scan QR code for more information

Meet your Jayco Dealer



Follow Jayco
#Jayco50



Jayco, Inc. | P.O. Box 460 | Middlebury, IN 46540 © RVIA See dealer for further information and prices. All information in this brochure and on www.jayco.com is the latest available at the time of publication approval. Jayco reserves the right to make changes and to discontinue models without notice or obligation. Photography may show optional equipment or props used for decoration purposes only. RVs built for sale in Canada may differ to conform to Canadian codes. JAYCO and the JAYCO BIRD IN FLIGHT are registered trademarks of Jayco, Inc. Printed in USA 50K 9/18 ©2018 Jayco, Inc. 274890

Travel with Confidence



At Jayco, we build our RVs to handle every adventure, then back them with our industry-leading 2-year limited warranty. We, with support from our select partners, have you covered for **2 camping seasons** or **twenty-four thousand (24,000) miles** (mileage limitation applies to motorized products only), whichever occurs first, from the original date of purchase. You won't find a better warranty in the business, because the only strings we attach are those that deliver the ultimate in reliability. That's the Jayco difference. So go explore. For a copy of our 2-year limited warranty with complete terms and conditions, please contact your local Jayco dealer.



A year's access to Coach-Net™—the country's largest RV emergency road service.

